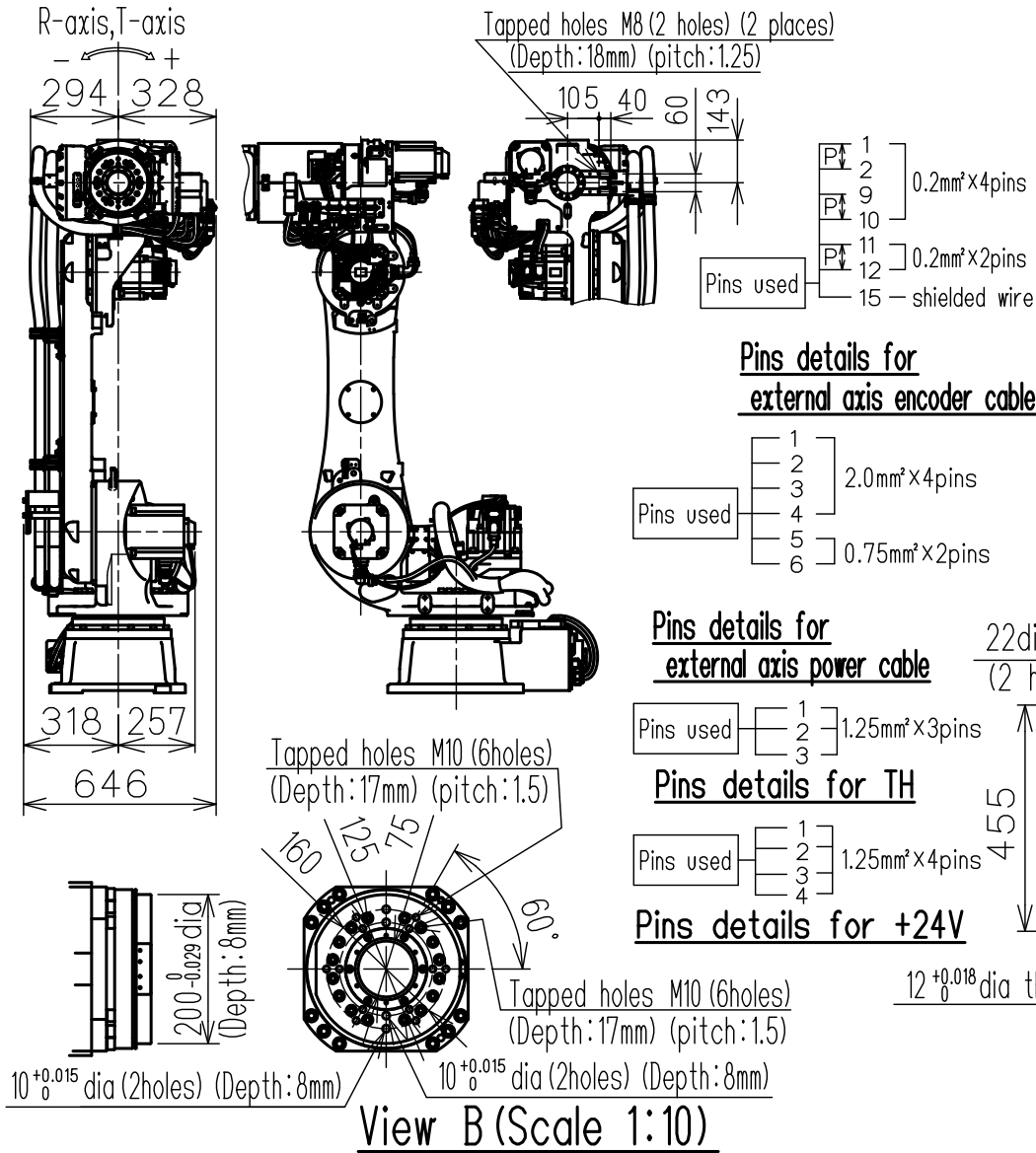
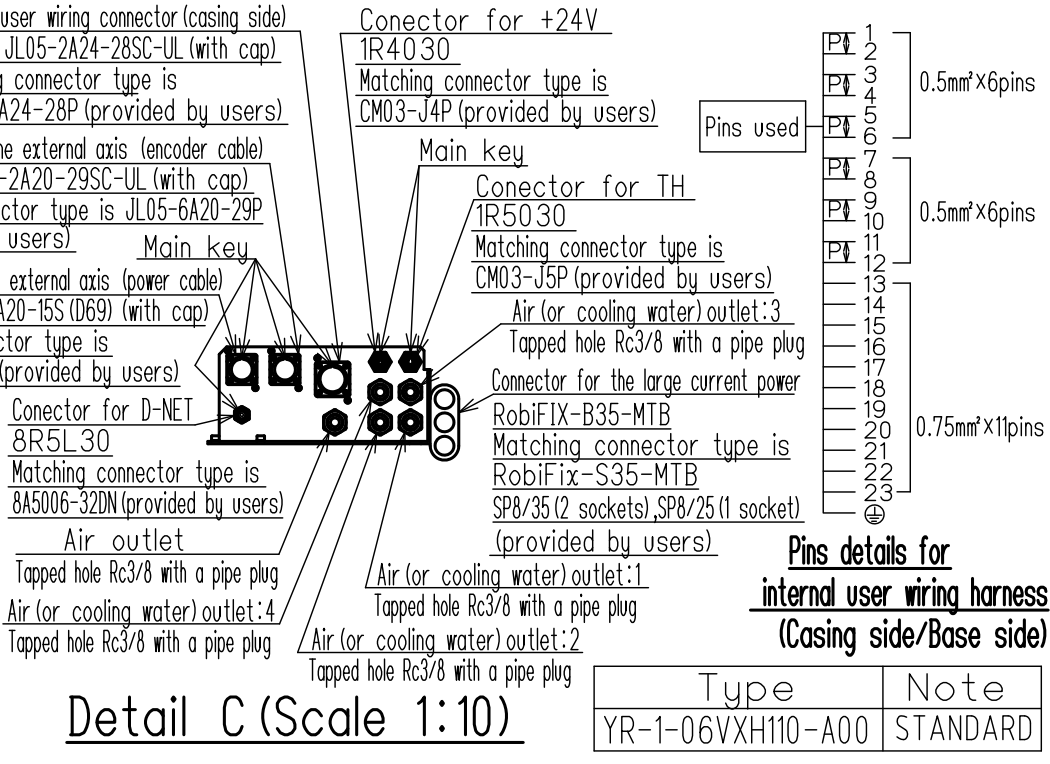
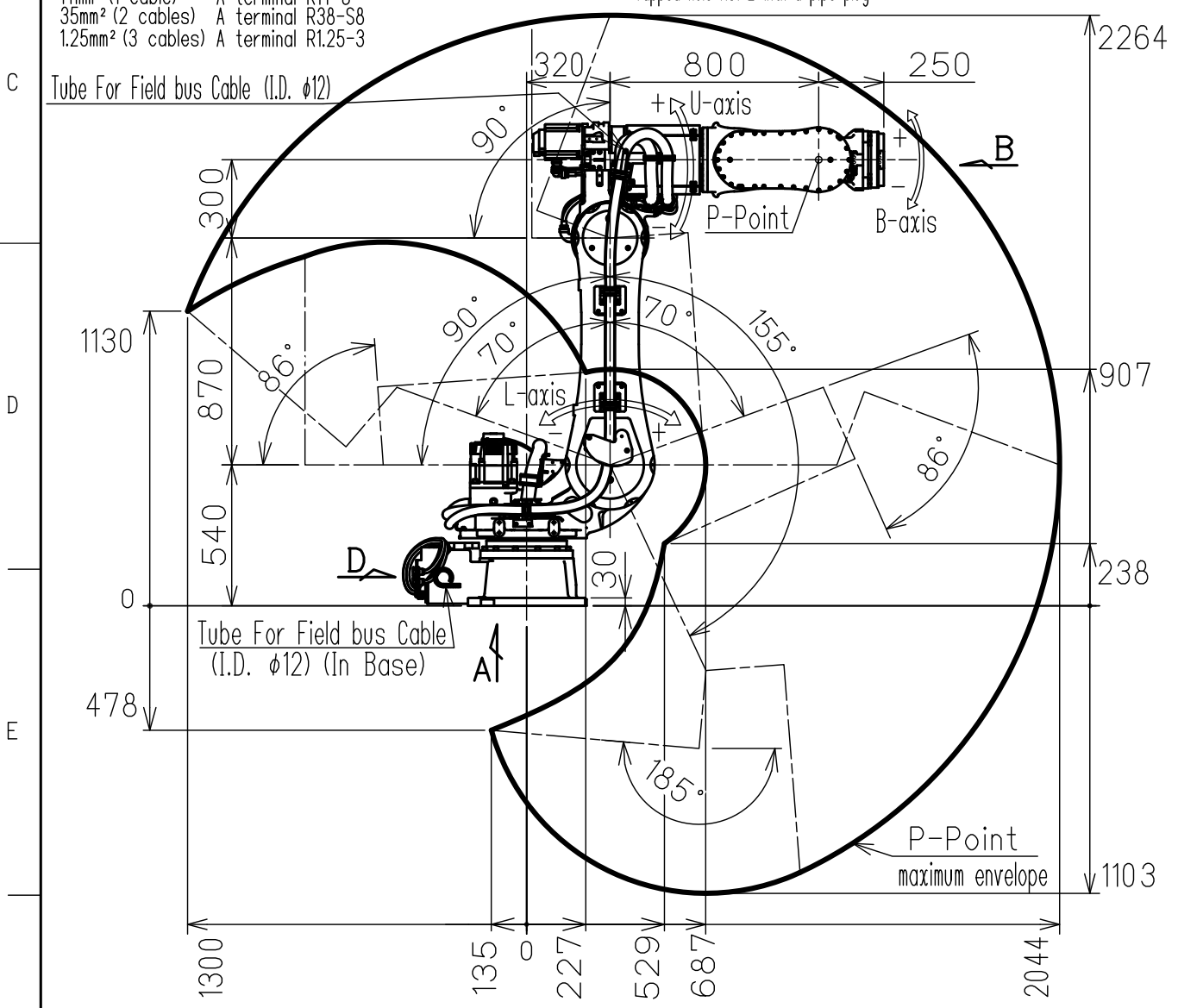
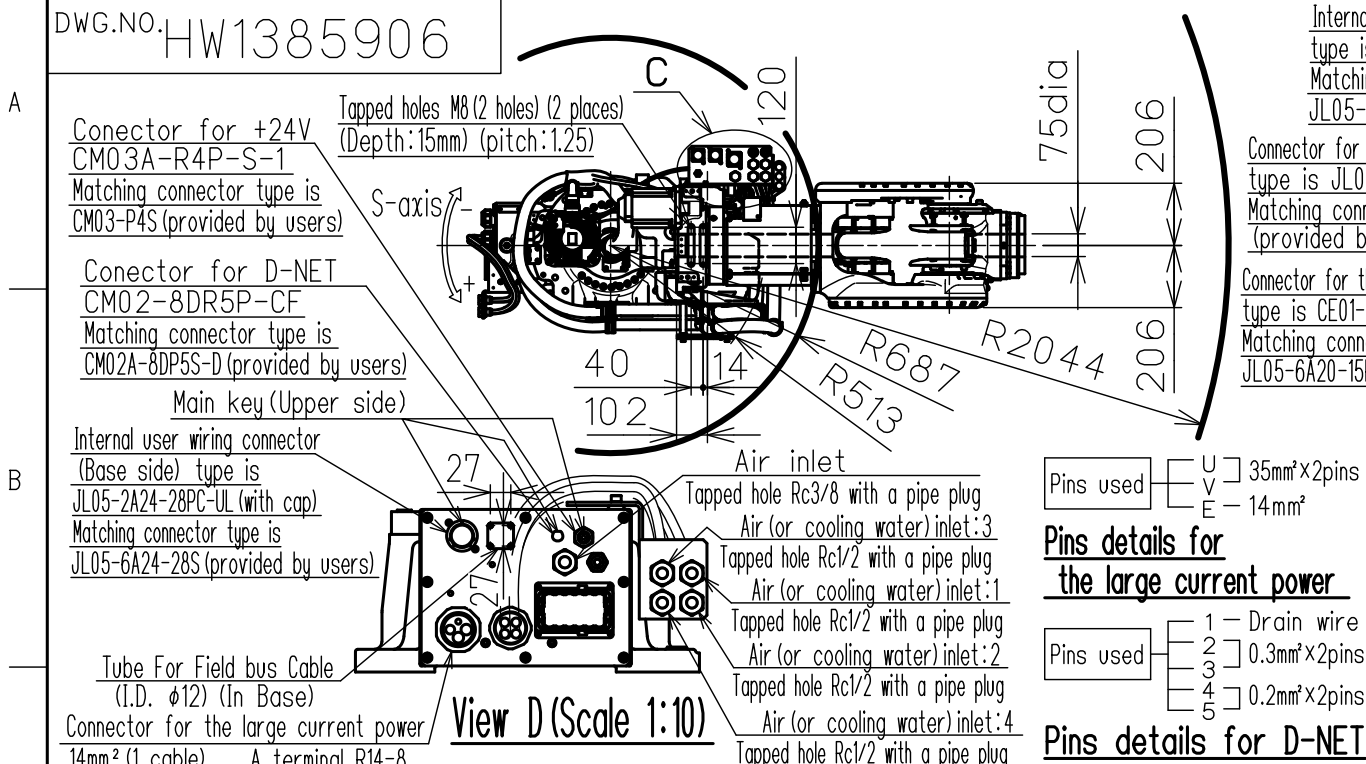
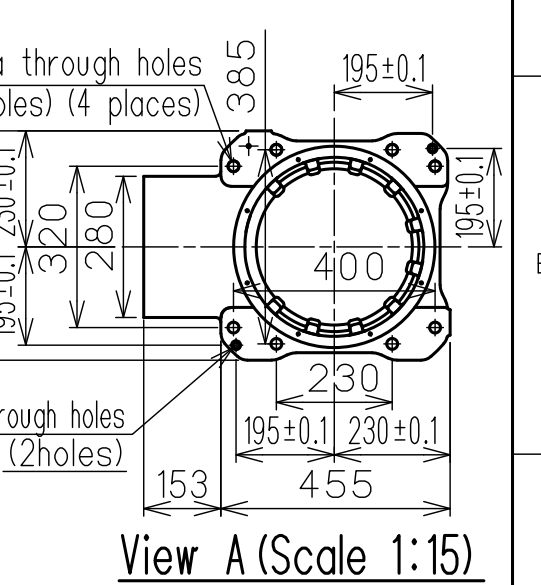


DWG.NO. HW1385906



Item	Model	MOTOMAN-GP110H
Configuration		Vertically articulated
Degree of Freedom		6
Payload	Wrist	110kg
	On U-arm	30kg
Repeatability (※1)		±0.2mm
Range of Motion	S-Axis (Turning)	-180° - +180°
	L-Axis (Lower Arm)	-90° - +155°
	U-Axis (Upper Arm)	-86° - +90°
	R-Axis (Roll)	-210° - +210°
	B-Axis (Pitch/Yaw)	-130° - +130°
Max Speed	S-Axis	2.44rad/s, 140°/s
	L-Axis	2.00 rad/s, 115°/s
	U-Axis	2.80 rad/s, 161°/s
	R-Axis	3.92 rad/s, 225°/s
	B-Axis	3.49 rad/s, 200°/s
Allowable Moment	R-Axis	721N·m (73.5kgf·m)
	B-Axis	721N·m (73.5kgf·m)
	T-Axis	315N·m (32kgf·m)
Allowable Inertia (GD²/4)	R-Axis	85kg·m²
	B-Axis	85kg·m²
	T-Axis	45kg·m²
Approx. Robot mass		730kg
Protected structure		Body: IP54 Wrist: IP67
Mounting method		Floor-mounted
Ambient Conditions	Temperature	0 to +45°C
	Humidity	20 to 80%RH (Non-condensing)
	Vibration	4.9m/s (0.5G) or less
	Altitude	1000m or less
	Others	•Free from explosive or corrosive gas and liquid. •Free from dust, soot, oil, or water. •Free from electrical noise. •Free from strong magnetic fields.
Power Requirements		5.0KVA
Controller		YRC1000

※1 Repeatability is conformed to ISO 9283.
 ※2 The manipulator is in the home position.
 Units: mm



Note:
 1. All rights reserved.
 2. Please note that the data is subject to be deleted without advance notice.
 3. No warranty is given in relation to the data including the specification.
 4. We are not responsible for any damages or loss caused by the use of the data.

FOR STUDY PURPOSE ONLY
 SCALE 1:25



Reference Drawing

TITLE MOTOMAN-GP110H
 DIMENSION DIAGRAM

DRWN DATE Feb.06.'18
 DWG.NO. HW1385906

SIZE A3